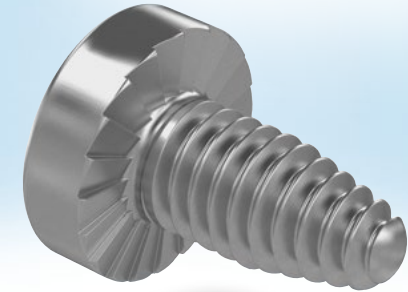




fotoIia-ID: 90596042 | © syrtichak

ARNOLD[®]
BlueFastening Systems



Sheetite[®]

Direct screw fastening for sheet metals

The market's demands

- + Reduces preparation / assembly times
- + Reliable assembly process
- + Reduces fastening costs
- + Uses existing machinery assembly technology
- + Reduces number of variants
- + Saves materials
- + Can be dismantled and recycled
- + Accessible from one side

ARNOLD provides the solution

Sheetite[®] Direct screw fastening for sheet metals

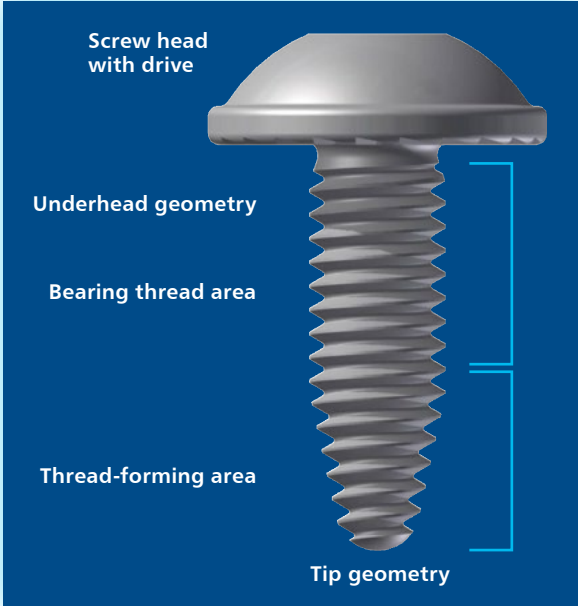


Watch how Sheetite[®] works

ARNOLD UMFORMTECHNIK provides an extensive selection of videos and animations. Just scan the QR code above or visit our website and click on our Youtube channel ARNOLD TV.

www.arnold-fastening.com

Product features and advantages



Potential head design

- + flat head, truss head
- + customer-specified solutions

Potential underhead geometry

- + locking toothing, milled toothing
- + customer-specified solutions

Round shaft cross-section

- + optimised load capacity
- + metric female thread

Polygonal shaft cross-section

- + low tapping torques
- + no chip formation during thread-forming

Rounded tip

- + improved hole location
- + reduces risk of injury
- + protects other components

Technical advantages of Sheetite®

- + Reliable assembly process
- + Metric female thread
- + Low tapping torques
- + Protects other components
- + Optimized load capacity
- + Flexible pre-punching
- + Improved hole location
- + Reduces risk of injury

Commercial advantages of Sheetite®

- + Saves on upstream processes
- + Reduces number of variants
- + Efficient solution without additional elements
- + Uses existing machinery / assembly technology
- + Reduces overall fastening costs



Learn more about Sheetite®, innovative sheet metal connections, and its applications

www.arnold-fastening.com

WHEN EXPERTISE TURNS INTO PROFIT

